

**2 New Towers**  
**at the Best Location of**  
**Crossings Republik**  
**NH-24, Ghaziabad**



**Actual Image**



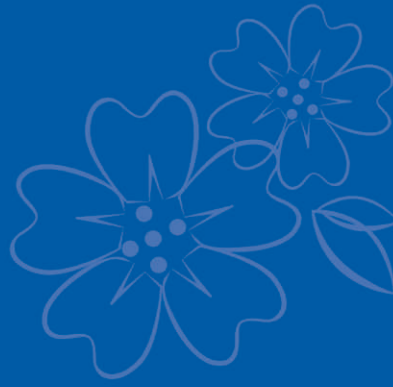
**PANCHSHEEL**  
**Wellington**  
At **CROSSINGS Republik** NH-24, Ghaziabad  
2 / 3 BEDROOM APARTMENTS

**PANCHSHEEL**  
**Wellington**  
At CROSSINGS Republik NH-24, Ghaziabad  
2/3 BEDROOM APARTMENTS



ABS Engineering College





## Location advantages

- GDA Approved Freehold Property with Vaastu-compliant projects
- Conveniently located at tri-junction of Ghaziabad, Noida and Gr. Noida on NH-24
- 360 acres of township endowed with malls, retail outlets, office spaces, hospitals, banks, schools and more
- Elaborate public utilities like High Capacity Bus Transport, Post Office, Police Station, Fire Station etc.
- 9-hole Golf Course within the township
- Well-connected with NH-24 (14 lane proposed) and Gr. Noida (West)
- World-class ambience, meticulous design and premium infrastructure



## **Panchsheel Wellington The Upper-Class Living**

Welcome to Panchsheel Wellington, premium homes at India's first global city, Crossings Republik, Ghaziabad. Nestled in close proximity to all conceivable facilities, overlooking lush green Golf Course and a serene lake, Panchsheel Wellington boasts of the best location and a confluence of elegant, opulent lifestyle. With architectural excellence and best design configuration, it offers you a posh living that matches your standard.

More than approx. 1200 families have already moved in here and are living a blissful life. Come, it's a perfect opportunity for you to own your dream home at Crossings Republik, NH 24.



# World's best facilities and amenities crafted around you

## Actual Images



Well Bazaar



Swimming Pool



Club "Paradiso"



Kids' Play Area



Gym



Party Lawn on Club Terrace

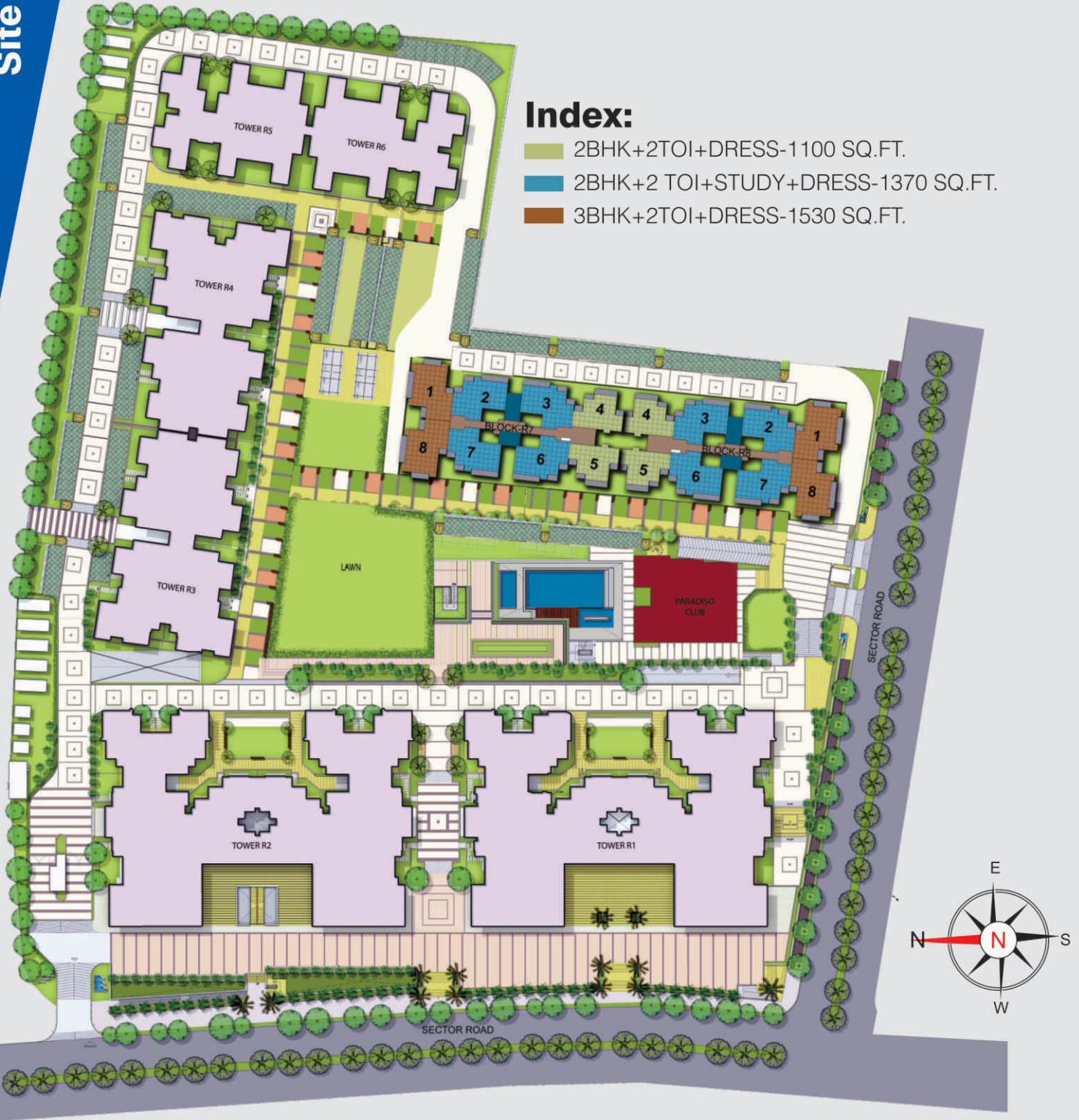
## Fabulous Features of Wellington

- Best society of Crossings Republik facing sprawling 9-hole Golf Course
- Approx. 27% of the plot area covered, rest all open to allow free flow of light and air to every corner of each apartment
- Vaastu & eco-friendly layout of the project
- Power back-up facility
- Uninterrupted water supply
- Individual RO System
- Lift facility of Johnson or equivalent
- Reserved covered car parking
- Convenient shopping plaza 'Well Bazaar' houses Bank, ATMs, Restaurants, Fast Food Joints, shops for daily needs etc.
- Well-equipped AC Club "Paradiso" with Swimming Pool, Gymnasium, Billiards Room, Carrom Room, Table Tennis Room, Unisex Salon, Jacuzzi, Kids Play Area etc.
- Party Lawn on club terrace
- Beautifully landscaped parks



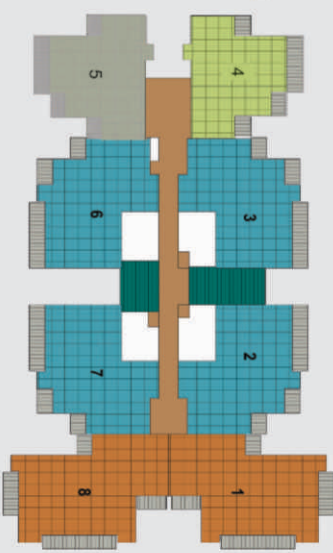
**Index:**

- 2BHK+2TOI+DRESS-1100 SQ.FT.
- 2BHK+2 TOI+STUDY+DRESS-1370 SQ.FT.
- 3BHK+2TOI+DRESS-1530 SQ.FT.



RERA Regn. Nos. of Project: UPRERAPRJ8805 | For details visit RERA website: [www.up-rera.in](http://www.up-rera.in)





**TOWER - T 7 & T 8**  
(Unit 4 & 5)

**MIG / 2BHK**

**AREA: 1100 SQ.FT.**

- 2 Bedrooms
- Drawing/Dining
- Kitchen
- Dress
- 2 Toilets
- 4 Balconies

Area	Sq. Ft.	Sq. Mt.
<b>Salable</b>	<b>1100.00</b>	<b>102.19</b>
Built-up	828.61	76.98
Carpet	657.68	61.10



**MINI-HIGH/ 2BHK +Study**

**AREA: 1370 SQ.FT.**

- 2 Bedrooms
- Study
- Drawing/Dining
- Kitchen
- Dress
- 2 Toilets
- 3 Balconies

Area	Sq. Ft.	Sq. Mt.
<b>Salable</b>	<b>1370.00</b>	<b>127.28</b>
Built-up	967.04	89.84
Carpet	808.81	75.14

**TOWER - T 7 & T 8**  
**(Unit 2, 3, 6 & 7)**





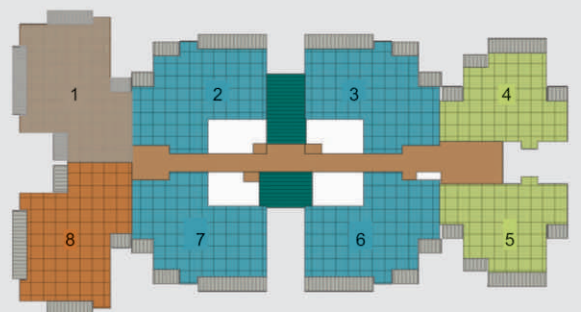
**HIG/ 3 BHK + Dress**

**AREA: 1530 SQ.FT.**

- 3 Bedrooms
- Drawing/Dining
- Kitchen
- Dress
- 2 Toilets
- 4 Balconies

Area	Sq. Ft.	Sq. Mt.
Salable	1530.00	142.14
Built-up	1121.07	104.15
Carpet	915.15	85.02

**TOWER - T 7 & T 8**  
(Unit 1 & 8)





**Structure :** Earthquake resistant R.C.C. Frame structure certified by IIT, Roorkee/JMI, Delhi.  
**External Finish :** Combination of long lasting paint.



**BALCONIES**  
Flooring : Anti-skid Tiles.



**DRAWING & DINING ROOM**  
Floor: Vitrified tiles. Walls/Ceiling Plastered and painted with pleasing shades of O.B.D.



**TOILETS**  
Floor : Anti-skid Tiles. Walls : Ceramic Tiles up to door level  
Fittings & Fixtures : All taps Chrome plated ISI Mark. European W.C., Washbasin & Cisterns . Provision for hot & cold water.



**KITCHEN**  
Floor: Vitrified tiles. Walls/Ceiling: Plastered and painted with pleasing shades of O.B.D.  
Ceramic Glazed tiles up to 2 ft. height above counter. Platform: Pre-polished granite platform with stainless steel sink.



**DOORS AND WINDOWS**  
Entrance Door : Seasoned hard wood frame flush door. Internal Doors : Flush doors.  
External doors & windows frames : Glazed Powder coated aluminium.



**MASTER BEDROOM**  
Floor : Vitrified Tiles.  
Walls/Ceiling : Plastered and painted with pleasing shades of O.B.D.



**STAIRCASE**  
Floor: Marble Flooring.  
Walls/Ceiling : plastered and painted with pleasing shades of O.B.D.



**OTHER BEDROOMS**  
Floor : Vitrified tiles. Walls/Ceiling : Plastered and painted with pleasing shades of O.B.D.



**ELECTRICAL**  
ISI copper wiring in P.V.C. concealed conduit in Bedrooms/Drawing/Dining, Toilets & Kitchen . Provision for adequate light and power points as well as telephone & TV outlets with protective M.C.Bs'. Intercom/TV: Facility & provision for DTH connection in one room.



**LIFT LOBBY**  
Flooring : Vitrified Tiles.  
Walls: Plastered & painted with pleasing shades of O.B.D. Elevators : Two high speed elevators.



**WATER SUPPLY**  
Underground and overhead water tanks with pumps for 24 hrs Uninterrupted water supply.

# Panchsheel Group. Building Future.

World-class residential & commercial projects in Noida, Greater Noida, Vaishali & Ghaziabad

Nearly 3 decades  
of strong standing

7000+ Possession  
given till December 2017

Thousands of  
Satisfied Customers

Over 10,000 apartments  
under construction

## Delivered Projects




Approx. 300 families moved in

Actual View

Phase-1 delivered

**PANCHSHEEL H4NISH**

2/3 BR Homes Sec-1, Gr. Noida (W)



Approx. 500 families moved in

Actual View

**PANCHSHEEL GREENS**

2/3 BR Apts. Gr. Noida (West)

Plot No. GH-01A, Sector 16B, Gr. Noida (W)




Ready to move-in shops

Actual View

**PANCHSHEEL Greenaria**

Premium Retail Spaces at G. Noida (West)

Plot No. GH-01A, Sector 16B, Gr. Noida (W)




Actual View

**PANCHSHEEL Wellington**

At Crossings Republik, NH-24, Ghaziabad

2/3 BEDROOM APARTMENTS

Crossings Republik, Ghaziabad



Actual View

**PANCHSHEEL PRIMROSE**

2/3 BR Apts. Opp. Govindpuram, Anaj Mandi, GZB.



Actual View

**PANCHSHEEL Well Bazaar**

At Wellington, Crossings Republik, Ghaziabad




Actual View

**PANCHSHEEL SQUARE**

SHOPS OFFICE SPACES FOOD COURT

Crossings Republik, Ghaziabad

## Ongoing Projects



Actual View

**PANCHSHEEL PRIME 390**

LOW-RISE FLOORS AT PANCHSHEEL PRIMROSE, GZB.

Low-rise (G+4 Storied) 3 BHK apartments with 8ft. wide verandah



Actual View

**PANCHSHEEL PINNACLE**

Live above everything else

Plot No. GH-01A, Sector 16B, Gr. Noida (W)

High-rise apartments

Aluminium shuttering used for better construction Quality.




Actual View

**PANCHSHEEL**

The name is the address

2/3 BR HOMES Sec-75, Noida

Aluminium shuttering used for better construction Quality.



Actual View

**PANCHSHEEL Pebbles**

Homes near Vaishali Metro Stn., Sector 3, Vaishali, GZB



Actual View

**Panchsheel Villas**

GREATER NOIDA (WEST)

Plot No. GH-01A, Sector 16, Gr. Noida (W)



Phase-1 Possession offered. 1950 Flats

Actual View

**PANCHSHEEL GREENS-II**

2/3 BR Apts. Gr. Noida (West)

Plot No. GH-01A, Sector 16, Gr. Noida (W)



Artistic View

**PANCHSHEEL GREENMART**

Plot No. GH-01A, Sector 16, Gr. Noida (W)



Booking Open in 2 New Towers

Actual View

**PANCHSHEEL Wellington**

At Crossings Republik, NH-24, Ghaziabad

2/3 BEDROOM APARTMENTS

Crossings Republik, Ghaziabad

Disclaimer: Visual representation of images and elevation shown in this brochure are purely conceptual. All plans, specifications, layouts etc. are tentative and subject to variations and modifications by the company or the competent authorities and company does not bear any legal consequences for it. The areas are approx. 1 sq. mt. = 10.764 sq.ft. (10.764 sq.ft. = 1.0 sq.mt. = 10' sq.mm.) we are RERA compliant

# Location Map



## Panchsheel Buildtech Pvt. Ltd.

An ISO 9001 : 2008 Company

Corporate Office: H-169, Sector - 63, Noida - 201301.

Site Office: Plot No. - 6, Sector - 1, Crossings Republik, NH-24, Ghaziabad (U.P.).

Phone : 0120-4777700 / 4777777 (15 Lines) Fax: 0120-4777798 Toll Free: 1800 200 3656

SMS PBL to 53030 • Email : sales@panchsheelgroup.com

www.panchsheelgroup.com

Sales Enquiry: 7827 789 789

Follow us on:



Member of:

